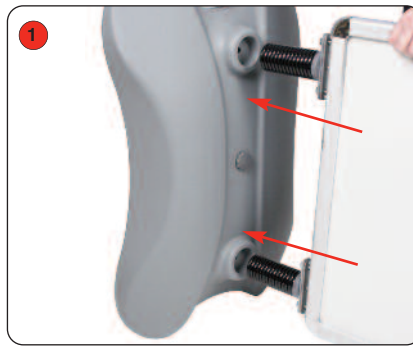


Assembly Instructions



Kit includes: Snap frame, moulded base and 2 x bolts



1 Insert the snap frame springs into the moulded base.



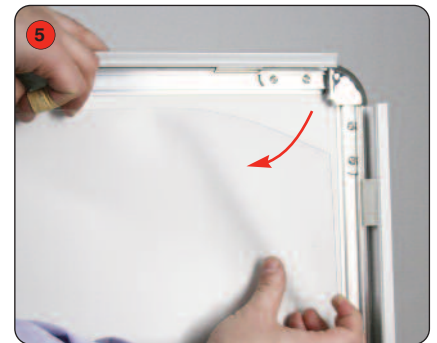
2 Insert bolt and washer through the top of the moulded base.



3 Tighten the bolt to secure the snap frame to the moulded base. Repeat steps 3 and 4 for the second bolt.



4 Open up the snap frame sides.



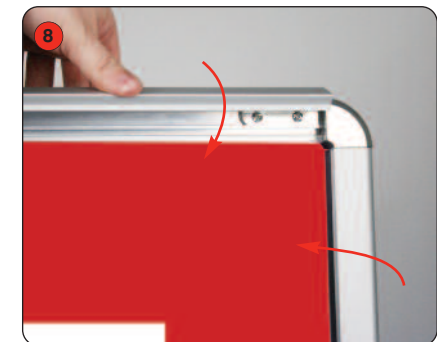
5 Remove the protective cover.



6 Fit the graphic into the snap frame.



7 Fit the protective cover.



8 Close the snap-frame sides to hold the graphics in place.

Note :
When moving the unit do not drag the base.
Tip unit onto it's wheels and pull or push to move.