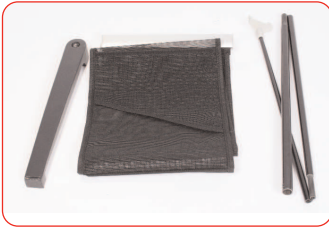


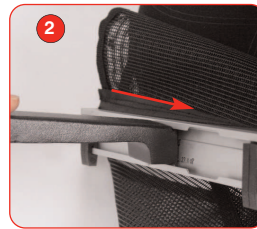
Assembly Instructions



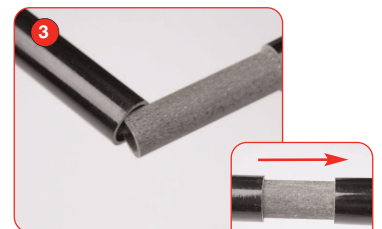
Kit includes: bungee pole, fabric literature holder with base and top rail and Stabilising foot.



1 Slide the Stabilising foot into the base sections.



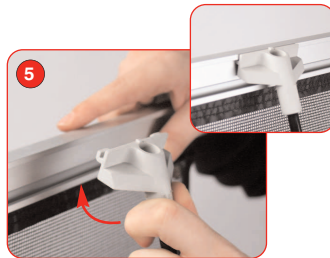
2 continue to slide the stabilising foot into the centre of the bottom rail.



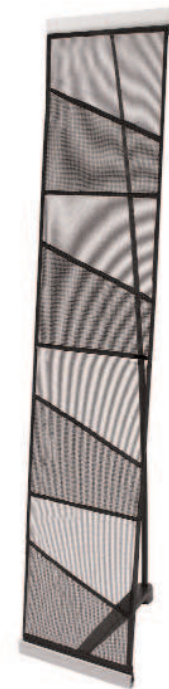
3 Open up the bungee pole and connect each part together.



4 Fit the wider end of the bungee pole into the base.



5 Bend the pole slightly, hold up the literature holder and fit the top rail onto the pole.



4 Pocket Xanadu (WH432)